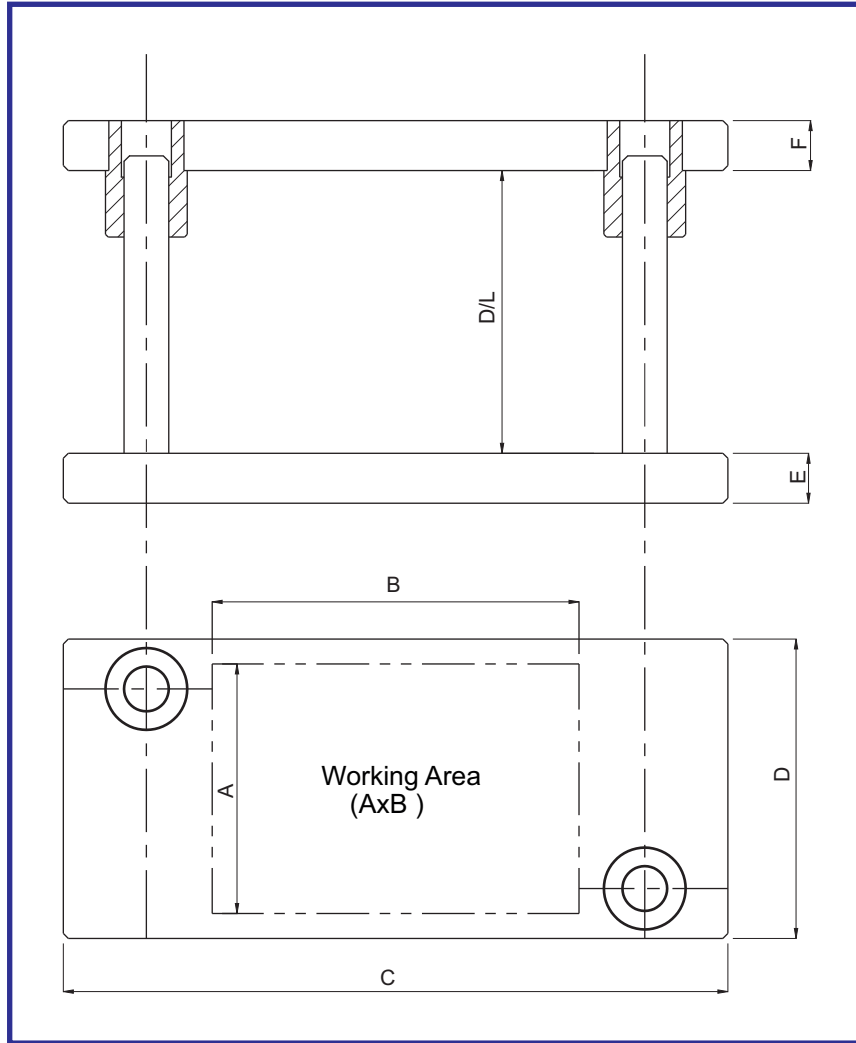


► Diagonal Pillar Die Sets (PMSD / PMSDB)



Die Set Plain

Material :

Plate :- MS

Pillar :- En353

Bush :- En353

Hardness :

Pillar :- 55 - 58 HRC

Bush :- 55 - 58 HRC

Die Set With Ball Cage

Material :

Plate :- MS

Pillar :- En353

Bush :- En353

BallCage :- Brass / Aluminium

Hardness :

Pillar :- 58 - 60 HRC

Bush :- 58 - 60 HRC



Order Type :- Code - D/L

Example :- PMSD100 X 100 -125

DIAGONAL PILLAR DIE SET PLAIN

Code	A	B	C	D	E	F	CD	PILLAR SIZES
PMSD 100X100	100	100	225	110	32	32	164.0	24/25
PMSD 125X125	125	125	255	135	32	32	194.0	24/25
PMSD 150X150	150	150	290	160	32	32	222.5	28/29
PMSD 175X175	175	175	315	185	32	32	247.5	28/29
PMSD 200X200	200	200	350	210	40	40	277.5	34/35
PMSD 250X250	250	250	400	260	40	40	327.5	34/35
PMSD 300X300	300	300	450	310	40	40	372.5	40/42

DIAGONAL PILLAR DIE SET WITH BALLCAGE

Code	A	B	C	D	E	F	CD	PILLAR SIZES
PMSDB 100X100	100	100	240	110	32	32	172	24/25
PMSDB 125X125	125	125	270	135	32	32	202	24/25
PMSDB 150X150	150	150	305	160	32	32	232	28/29
PMSDB 175X175	175	175	330	185	32	32	257	28/29
PMSDB 200X200	200	200	365	210	40	40	287	34/35
PMSDB 250X250	250	250	415	260	40	40	337	34/35

Note : Our standard day light is 100mm. Day light to any other specification can be provided.
Die Set as per Customer Drawing can also be manufactured.